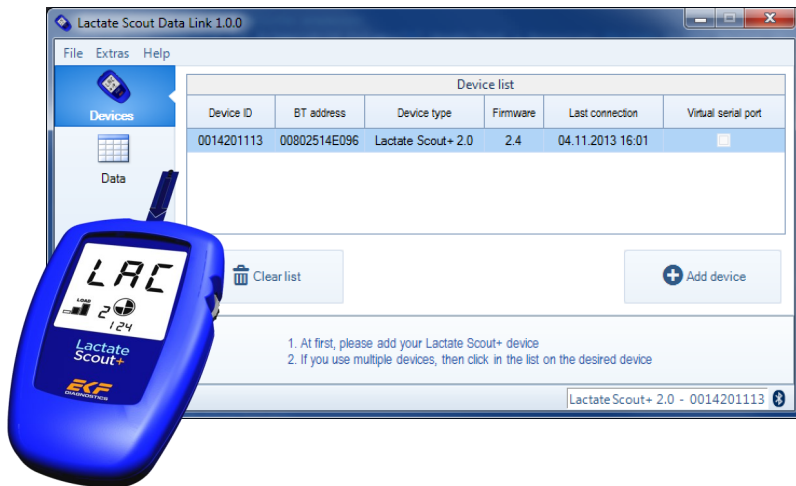


# Lactate Scout Data Link



Software installation and user manual

## INTENDED USE

Lactate Scout Data Link version 1.0.0 is an easy to use software for Windows operating systems. It enables the transfer of test results from the Lactate Scout+ analyzer to a PC via the integrated Bluetooth® interface. The data are stored in CSV format, a simple file format that can be handled by standard PC programs like Microsoft® Excel.

For correct usage of analyzer, USB-Bluetooth® Dongle, PC and all other items in use for the application refer to their respective product documentation, instructions for use and application notes.

## WARNING NOTICES

The handling of electronic equipment generally involves potential risks. Handling mistakes can cause impairment of function or irreversible damage of the connected devices and loss of data.

The Lactate Scout Data Link Software was tested for its compatibility with a wide range of common PC environments and configurations. Still, we cannot exclude all potential risks of conflicts with individual computer configurations, applications, drivers or hardware components during the installation or application of this software. **It is strictly recommended to save relevant settings and data prior to the installation!**

**SensLab GmbH does not take any liability for 3rd party components. Impaired function, data loss or any other defects and resulting claims other than the provision of the software are not covered by Senslab GmbH.**

If you are uncertain of any instruction given herein please contact your system administrator, an authorized PC support or ask your local dealer for assistance with the software installation or check of your PC system.

Editor:  
SensLab GmbH, Bautzner Str. 67, D - 04347 Leipzig

Distributed by:  
EKF-diagnostic GmbH, Ebendorfer Chaussee 3, D - 39179 Barleben

Rev. 0.0 - 12/2013

## **TABLE OF CONTENTS**

1. Software installation
2. User interface
  - 2.1. Tab <Devices>
  - 2.2. Tab <Data>
  - 2.3. Help panel
  - 2.4. Status bar
3. Usage of the Lactate Scout Data Link software
  - 3.1. Requirements for data transfer
  - 3.2. Add a Lactate Scout+ device
  - 3.3. Data transfer from Lactate Scout+
  - 3.4. Display of exported data
4. Trouble shooting

## 1. SOFTWARE INSTALLATION

The installation file for the Lactate Scout Data Link Software is available as free download at [www.lactatescout.com](http://www.lactatescout.com) or on the Info CD of the Lactate Scout+ Start Set. The ZIP-compressed download file needs to be extracted prior to the installation. Appropriate programs for this are freely available or pre-installed as a standard.

Start the installation by double-clicking on the file „Setup.exe“ and follow the instructions. The following system requirements are needed for the installation:

- 1 GHz or more Pentium-compatible processor
- Minimum 256MB RAM and 20MB free hard drive space
- Operating system: Microsoft Windows® XP (SP3), Microsoft Windows® Vista, Microsoft Windows® 7 or Microsoft Windows® 8
- Installed Bluetooth® 2.0 interface with Microsoft Bluetooth® stack (see section 3.1. Requirements for data transfer)

Microsoft .NET Framework 4 must be installed on the PC. If .NET Framework 4 is not installed, a new window opens and you are asked to accept the Microsoft license terms. Subsequently, the missing files are downloaded and installed (requires an existing internet connection).

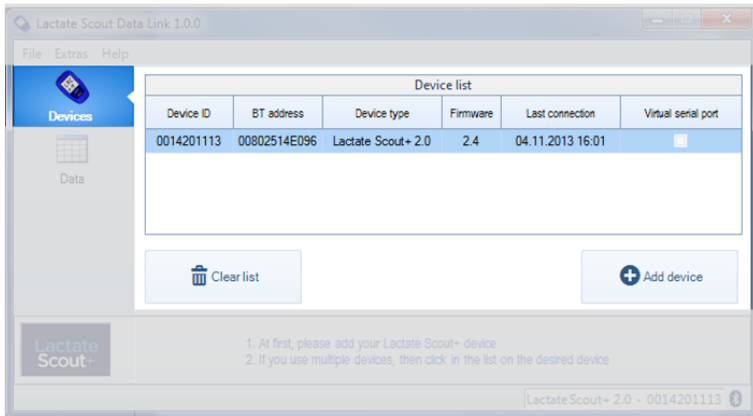
Click on “Continue” and the installation is processed with the related settings. The following icon appears on the Windows screen:



## 2. USER INTERFACE

Start the Lactate Scout Data Link Software by double-clicking on the program icon or from the Start menu. A new user interface opens up automatically. Two different tabs can be selected on the left site of the user interface.

### 2.1. Tab <Devices>



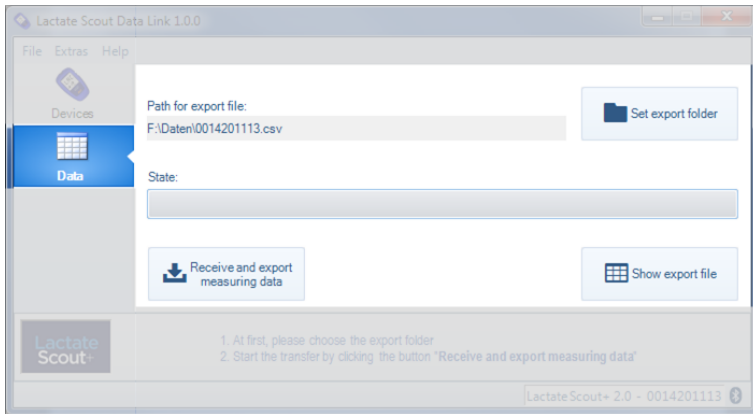
The **<Device list>** displays one line for every installed Lactate Scout+ device and related information (device ID, BT address, device type, Firmware version, date/time of last connection to the device).

The Lactate Scout Data Link Software does not require any virtual serial ports for the communication with Lactate Scout+ devices, while other software solutions like Lactate Scout Assistant or other third party solutions require a virtual serial port for the communication with Lactate Scout+. In case you intend to use any of this software in parallel with Lactate Scout Data Link you can install the virtual serial port for the respective device by check-mark.

The button **<Add device>** starts the device wizard for the installation of new devices (see section 3.2.)

The button **<Clear list>** removes all Lactate Scout+ devices from the device list. The internal Windows Bluetooth® pairing connection keys are not changed.

## 2.2. Tab <Data>



The location of the export file is shown together with the file name in the field **<Path for export file>**.

In order to determine the destination folder for the export file click on the button **<Set export folder>**. The preset destination folder is the folder „My documents“ of the current user (e.g. C:\Users\Miller\Documents\0001100135.csv).

By use of the button **<Receive and export measuring data>** a Bluetooth® connection is established to the Lactate Scout+ and the measured data are transferred, see section 3.3.

By clicking on the button **<Show export file>** the export file for the selected Lactate Scout+ is displayed, see section 3.4.

## 2.3. Help panel

On the bottom of the main window short instructions are displayed for the currently selected tab.

## 2.4. Status bar

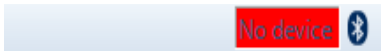
Following indications can be displayed in the status bar:

### Display

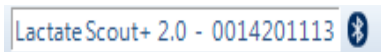


### Meaning

The software could not find a compatible USB Bluetooth dongle.



A compatible USB Bluetooth dongle was found, but no Lactate Scout+ device is installed.



A compatible USB Bluetooth dongle was found. A Lactate Scout+ 2.0 device with device ID 0014201113 was installed and selected.

## 3. USAGE OF THE LACTATE SCOUT DATA LINK SOFTWARE

### 3.1. Requirements for data transfer

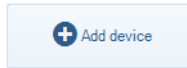
The use of the Lactate Scout Data Link Software with a Lactate Scout+ device requires a compatible Bluetooth® interface. We recommend the USB- Bluetooth®-Dongles available from your EKF-supplier (REF-No. 7023-7531-0350). Detailed information on the Bluetooth® installation can be found in the "Instructions for Bluetooth® installation for Lactate Scout+" at [www.lactatescout.com](http://www.lactatescout.com) or on the Info CD of the Lactate Scout Start Set.



The risk of system conflicts was reduced by tests in different system environments. Due to the complexity of contemporary PC systems and continuous updates of software and drivers conflicts cannot be excluded in general and are not in the responsibility of the manufacturer or supplier.

### 3.2. Add a Lactate Scout+ device

1. Open the tab **<Devices>** in the main window.
2. Click on the button **<Add device>**:



The device wizard is started. On the welcome page click on **<Next>**:



3. Turn on the Lactate Scout+ device by pressing the scroll wheel for more than 2 seconds without inserting a sensor. Make sure that the Bluetooth module on the device is switched on, see Lactate Scout+ User manual, page 23-25:



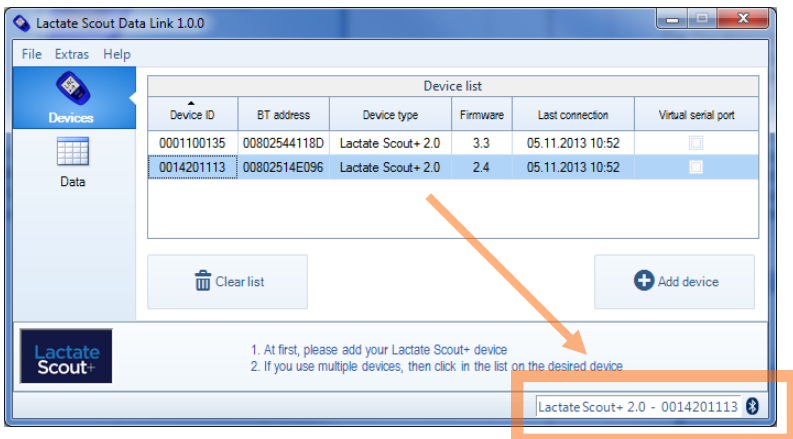


4. Click on the button **<Next>**:



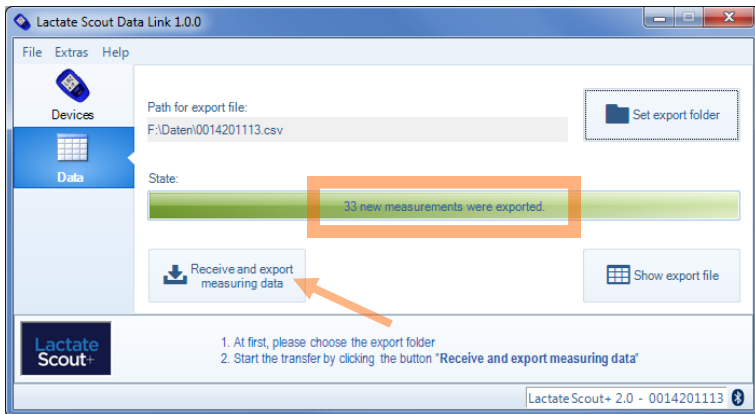
The search for devices begins and all Lactate Scout+ devices in range are tracked. When a new device is found the device related data are registered and saved to the device list.

5. After completion of the installation the assistant is closed automatically within 3 seconds. The new device is now shown in the device list together with already registered devices in case there are any. Click on the device in the list that you intend to use for the data export. The selected device now appears in the status bar:



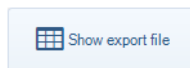
### 3.3. Data transfer from Lactate Scout+

1. Make sure that the Lactate Scout+ device is switched on and that the Bluetooth module is activated, see section 3.2.
2. Click on the button **<Receive and export measuring data>**. Subsequently, the data are transferred from the Lactate Scout+ device and are stored in the CSV file. If the file already exists only the new measured values are added to the file. The status bar indicates the number of values transferred to the file:



### 3.4. Display of exported data

In order to display the CSV file click on the button **<Show export file>**:



If Microsoft® Excel is installed it will be used automatically to display the data. If not, the file will be shown by the Windows editor. The export file has the following structure:

Labels for the table columns:

- Internal Measurement ID
- Memory position
- Date of measurement
- Time of measurement
- Lactate value in mmol/L
- Type of measurement:
  - SingleMeasurement
  - StepTestPreLoad
  - StepTestLoad
  - StepTestAfterLoad

MID	Mem Pos	Date	Time	Lactate value[mmol/L]	Measurement type
3724	1	30.08.2013	02:33:03	10,6	SingleMeasurement
3725	2	30.08.2013	02:33:35	10,5	SingleMeasurement
3726	3	30.08.2013	02:34:06	5,2	SingleMeasurement
3727	4	30.08.2013	20:50:06	8,2	SingleMeasurement
3728	5	30.08.2013	20:51:00	10,7	SingleMeasurement
3729	6	30.08.2013	20:51:31	5,3	SingleMeasurement
3730	7	30.08.2013	20:51:55	7,2	SingleMeasurement
3731	8	30.08.2013	20:52:28	2,5	SingleMeasurement
3732	9	30.08.2013	20:53:16	11,2	SingleMeasurement
3733	10	02.09.2013	15:50:20	1,2	SteptestPreLoad
3734	11	02.09.2013	15:54:37	2,3	SteptestLoad
3735	12	02.09.2013	15:57:41	4,5	SteptestLoad
3736	13	02.09.2013	16:00:28	6,1	SteptestLoad
3737	14	02.09.2013	16:03:55	8,6	SteptestLoad
3738	15	02.09.2013	16:06:21	9	SteptestAfterLoad
3739	16	02.09.2013	16:07:13	7,3	SteptestAfterLoad
3740	17	02.09.2013	16:08:15	6,4	SteptestAfterLoad

## 4. TROUBLE SHOOTING

Problem	Cause / Solution
The device assistant doesn't find a device when searching.	<ol style="list-style-type: none"> <li>1. Please check if the Lactate Scout+ device is switched on and if Blue-tooth® is activated on the Lactate Scout+ .</li> <li>2. If still no device is found proceed as following: <ul style="list-style-type: none"> <li>• Click on the button <b>&lt;Clear list&gt;</b></li> <li>• Under <b>&lt;Extras&gt;</b> in the menu bar click <b>&lt;Reset Bluetooth Pairing&gt;</b> and start the device wizard again.</li> </ul> </li> </ol>
No Bluetooth® connection can be established during data transfer	<ol style="list-style-type: none"> <li>1. Please check if the Lactate Scout+ device is switched on and if Blue-tooth® is activated on the Lactate Scout+ .</li> <li>2. Compare if the serial number (device ID) of your device matches the one shown in the status bar. If not, select the appropriate device from the list.</li> <li>3. If still no connection is established proceed as following: <ul style="list-style-type: none"> <li>• Click on the button <b>&lt;Clear list&gt;</b></li> <li>• Under <b>&lt;Extras&gt;</b> in the menu bar click <b>&lt;Reset Bluetooth Pairing&gt;</b> and start the device wizard again.</li> <li>• Start the data transfer again</li> </ul> </li> </ol>
Upon start of the software the error message: „No USB- Bluetooth® dongle found“	The Bluetooth® dongle or the Bluetooth® stack used by your dongle may not be compatible. In this case please use the USB– Bluetooth® dongle provided by EKF (REF no. 7023-7531-0350)

