

# Lactate SCOUT Reference Card

Before using the Lactate Scout and the supplies, you must read the short instruction manual and additional information!



## 1. Test strips

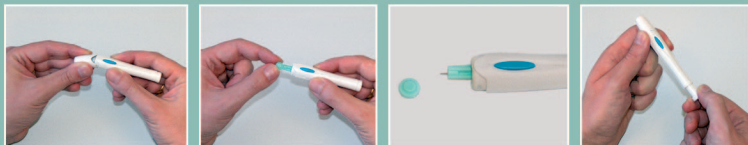
Pick a single test strip out of the vial, close the vial immediately and insert firmly the strip into the Lactate Scout: If the display shows a different code than printed on the vial, remove the strip & set code!



To set a new code, remove the test strip, switch on the Lactate Scout again by pressing the scroll-button for 1 sec. & choose „set code“!

## 2. Pricking

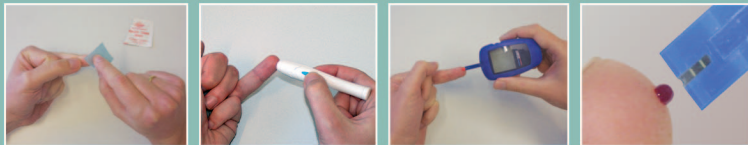
Twist the top off from the lancing device. Insert a new lancet. Twist the protective cap off carefully and close the lancing device. Cock the lancing device by pulling back and letting go the rear of the shaft.



To avoid potential infection risks, replace the lancet after each pricking and take a new one! Use always gloves to measure a 3rd party!

## 3. Measurement

Clean by water (e.g. by spray bottle), sanitize & dry the fingertip or earlobe carefully. Prick the area for blood withdrawal. Hold the Lactate Scout with test strip onto the blood droplet will be absorbed then & the measurement occurs.



Even a little content of sweat and alcohol causes too high values of lactate! Do not squeeze, and avoid contact of the test strip to the skin!



# Lactate SCOUT Reference Card

Before using the Lactate Scout and the supplies, you must read the short instruction manual and additional information!



## 4. Reading

When the displays shows LAC, the measurement runs and you will get the result after 15 sec. By readings above 25.0 mmol/l „Hi“ appears (or „Lo“ if lower than 0.5 mmol/l). Readings will be stored automatically.



Deleting a reading by inserted strip: Turn the scrollwheel on „dEL“ & press, „- -“ appears. Remove the strip, and the device shuts down.

## 5. Set mode

Push on the Lactate Scout without inserted test strip by pressing the scroll button for 1 sec. Turning the wheel, you can choose different options: Press briefly when you have reached the option you want to access.



set code:	Code setting	Snd:	Sound volume	clc:	Stopwatch
mem:	Memory/stored readings	dAt:	Date and time	cnd:	Countdown
d5C:	Device+sensor check	dur:	Duration of steplength		

The Lactate Scout shuts down manually by pressing the scroll button for 3 sec., or automatically after 5 minutes without any activity.

## 6. Any trouble?

If something doesn't work how expected, read the instruction manual or go to the online-support on [www.lactatescout.com](http://www.lactatescout.com). Repeat the test again regarding all recommendations. By health problems, consult a doctor!

Er 1: Test strip is unusable  
 Er 2: Insufficient blood sample  
 Er 3: Device can't contact the test strip  
 Er 4: Negative function control (d5C)  
 Er 5: Temperature too high/too low  
 Er 6: Internal hardware/electronics error

bat: Replace the retired batteries  
 : Temperature too high/too low  
 No display: After 5 min. without any activity (by inserted test strip), the display shuts off: Press the scroll button briefly. In set mode, you have to switch on the device again

The vial of test strips must always be closed! Keep away the test strips and the vial from prolonged light, humidity & high temperatures!

