

# Installation notes for PC Pack USB driver software and Windows® 7

Customer service:



Ebendorfer Chaussee 3  
D - 39179 Barleben / Magdeburg  
Phone: +49 (0) 392 03 - 785 - 14  
Fax: +49 (0) 392 03 - 785 - 24  
www.ekf-diagnostic.com  
service@ekf-diagnostic.de

## 1. Introduction

The PC Pack USB is available as an optional accessory for the Lactate SCOUT handheld analyzer. It contains a CD-ROM with the analysis software „Lactate SCOUT assistant“ and a special made SL USB data cable, certified for the use with medical devices according European directives.

The analysis software operates with all common Windows-operating systems without known limits. But the use of the USB data cable requires to install two additional software drivers as described in the attached PC Pack USB documentation.

This description does not fit totally to the specific installation procedure for PCs with the current operating system Windows 7. To ensure a proper functionality of the SL USB data cable if using such a system, please regard the following installation notes (in addition to the general instruction guide for the PC Pack USB).

## 2. Initial operation

In advance, the driver software for the USB CE cable has to be downloaded from [www.lactatescout.com](http://www.lactatescout.com), „Service“ or [www.ekf-diagnostic.com](http://www.ekf-diagnostic.com), „Support“. Take care to download the driver software especially marked for Windows 7. The download file is in ZIP format: Click twice to unzip the file, and save the folder with all its content on a local harddisk of the PC who is intended for the use of the SL USB data cable.

When the SL USB data cable is connected first with a Windows 7 driven PC, the operation system recognizes it as a new plugged hardware and tries to install the required drivers automatically (as shown by pictures).

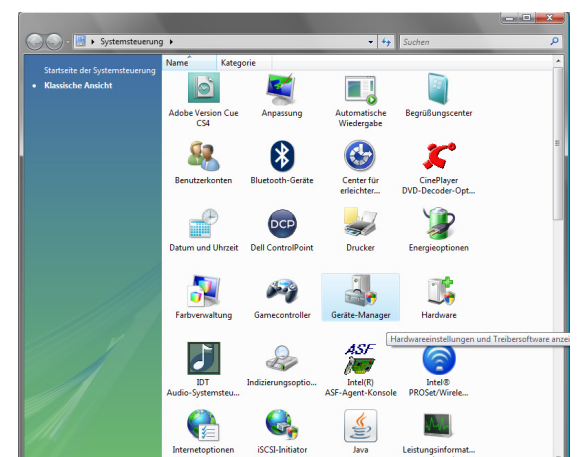
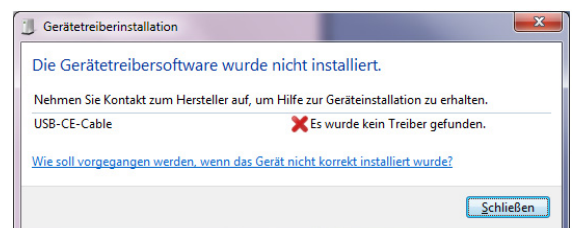
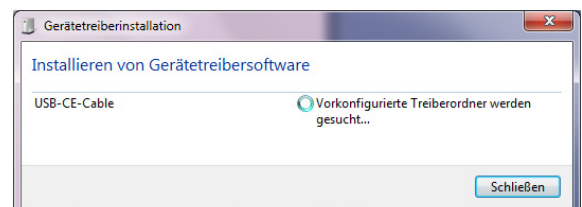
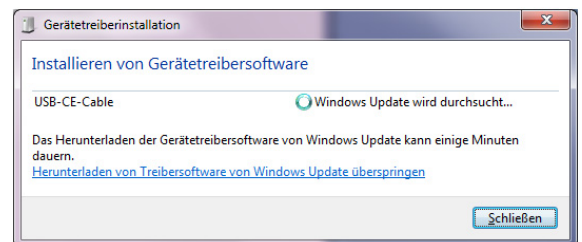
Unfortunately, the known Windows 7 releases (published at April 2010) are not able to find these files, even if they are downloaded, unzipped and saved properly. Therefore you have to install the required two driver files manually, as described in the following chapter.

## 3. Manual driver software installation

To install the driver software for the SL USB data cable manually, click on „Start“ resp. the Windows-symbol on the bottom left. A menu with various entries in two columns will open. Please click on „System panel“ in the middle of the right column.

Alternatively, you can open it by entering „system panel“ in the search box below, clicking twice on the program symbol in the shown results.

The system panel (looking similar to the picture) contents a range of system tools. Click twice on the symbol „device manager“, and a new window opens. It shows all connected devices on your PC (look next page).



If the USB data cable was plugged in first and the automatic installation by Windows 7 failed (chapter 2), the device manager shows the entry **USB-CE-Cable**.

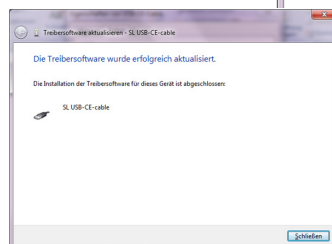
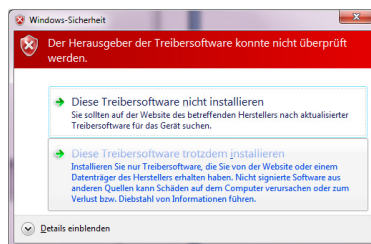
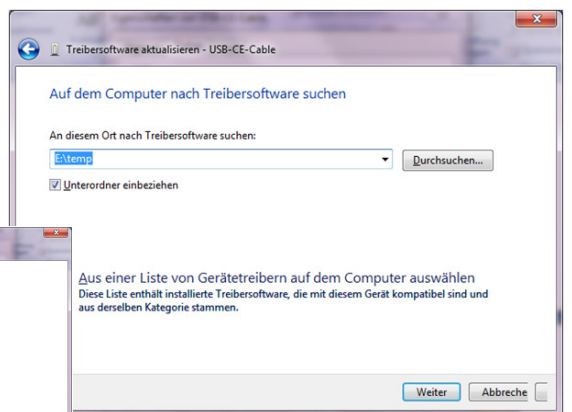
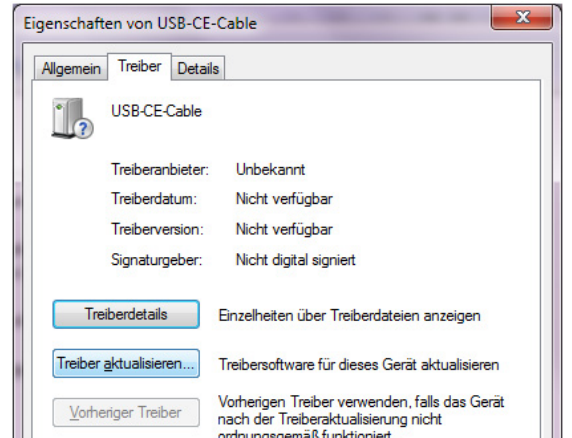
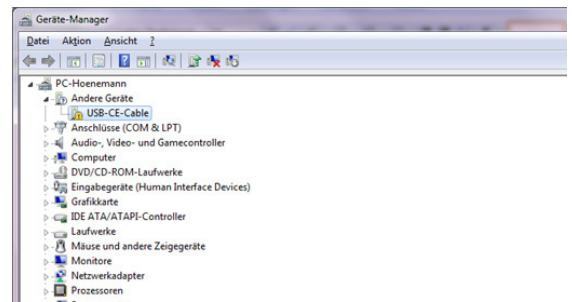
If this entry does not appear, click once on the entry „**Other devices**“. If the USB-CE-Cable is still missing there, ensure to proceed according chapter 2 again, without any interrupt of the installation procedure.

The **yellow warning triangle** on the entry „USB-CE-cable“ signals the recognition of the data cable as a new device, but the lack of a suitable driver software. Clicking twice on the entry, a new window opens and shows the properties of the device „USB-CE-cable“. Click on the **tab „Driver“** on the top, to see a window as shown by picture.

Click on the second button in this window to **Update driver**, and in the next dialogue window choose the second search method: **Search on this computer... (install driver software... manually)**. Please note, Windows 7 cannot install the driver automatically.

In the next step you can select the location (or the path) of the downloaded and unzip driver software file. If unsure about the location, click on the small black arrow in the line and select **Workplace**. The workplace is a summary of all connected harddisks, file directories and storage devices where the required file may be stored. Proceed by clicking on **Next**.

The device manager searches now automatically in all accessible directories for the required driver software. This needs a few seconds. If a red warning message appears, you can ignore it by clicking **Continue**. If the installation was successful, you get a message about and you can **Close** the window.



Please note you have to install two driver files in total, so the **installation must be repeated once again**.

Therefore you have to open the device manager again, selecting at „Other devices“ the **new entry USB Serial Port**. Click on its yellow warning triangle and proceed again as described.

If the second installation process is finished successfully, you can use the SL USB data cable as scheduled.

